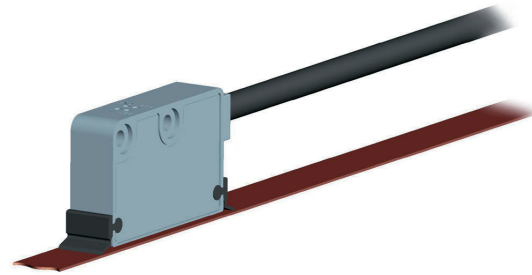


SME51

- Standard sensor for linear and rotary axis
- Gap clearance up to 2 mm
- Hi-flex sensor cable
- Status LED for clearance error
- Optional reference mark LKM1309/5 to be installed along the magnetic tape
- Optional tape cleaning wipers



ENVIRONMENTAL SPECIFICATIONS

Operating temperature range:	-25°C ÷ +85°C (-13°F +185°F)
Storage temperature range:	-40°C ÷ +100°C (-40°F +212°F)
Protection:	IP67

MECHANICAL SPECIFICATIONS

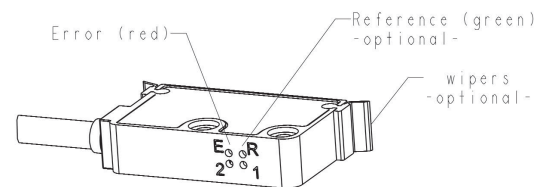
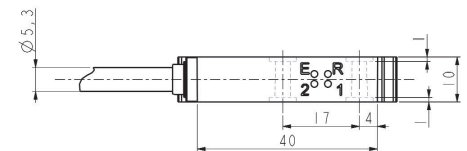
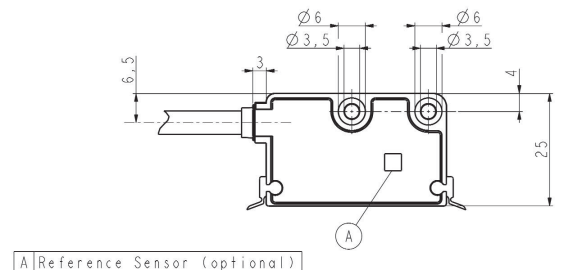
Dimensions:	see drawing
Housing:	die cast aluminium, UNI EN AC-46100
Connection:	Lika Hi-flex cable M8, 2,0 m
Gap sensor-magnetic tape (without cover strip):	0,1 ÷ 2,0 mm
Travel speed:	max 16 m/s (mechanical)
Resolution:	0,05 / 0,025 / 0,01 / 0,005 mm
System accuracy:	±15 µm max.
Repeatability:	±1 increment

ELECTRICAL SPECIFICATIONS

Power supply:	+5Vdc ±5%, +10Vdc ÷ +30Vdc
Output circuits:	Line Driver, Push-Pull
Output signals:	ABI, /ABI
Counting frequency:	acc. to edge distance setting
Output current (per channel):	40 mA max
Input current:	70 mA max
Protection:	against inversion of polarity (except 5Vdc version) and short-circuit

ACCESSORIES

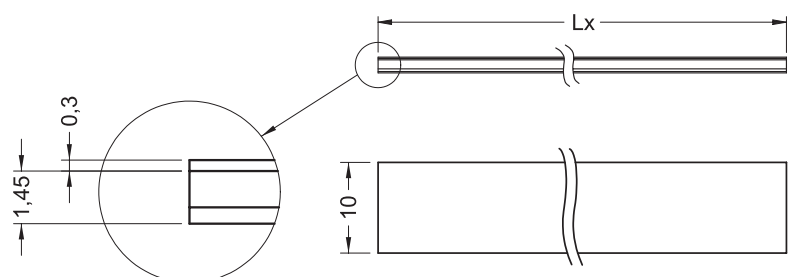
MT50:	Magnetic tape
LKM-1309/5:	Reference pole support
LKM-1440:	Tape terminals
KIT LKM-1722:	Wipers for SMExx/SMSxx, 10 pcs
MRI:	Magnetic ring
PS1:	Protection profile



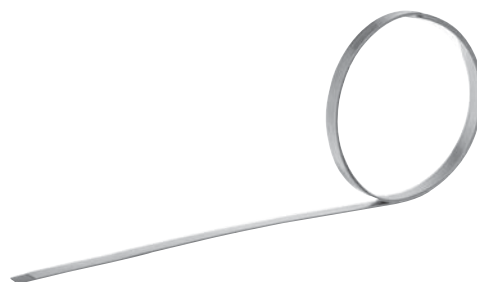
ORDERING CODE

XXXX	-	XX	-	X	-	XX	-	X	-	XX	X																													
SERIES		OUTPUT CIRCUITS		POWER SUPPLY		INDEX		RESOLUTION		EDGE DISTANCE																														
SME51		<table border="1"> <tr> <td>Push-Pull (AB)</td> <td>Y</td> </tr> <tr> <td>Push-Pull (AB, /AB)</td> <td>YC</td> </tr> <tr> <td>Line Driver (AB, /AB)</td> <td>L</td> </tr> </table>		Push-Pull (AB)	Y	Push-Pull (AB, /AB)	YC	Line Driver (AB, /AB)	L	<table border="1"> <tr> <td>+5Vdc ±5% (L)</td> <td>1</td> </tr> <tr> <td>+10Vdc ÷ +30Vdc (Y and L)</td> <td>2</td> </tr> </table>		+5Vdc ±5% (L)	1	+10Vdc ÷ +30Vdc (Y and L)	2	<table border="1"> <tr> <td>N</td> <td>without</td> </tr> <tr> <td>I</td> <td>every 5 mm</td> </tr> <tr> <td>R</td> <td>unique reference signal</td> </tr> </table>		N	without	I	every 5 mm	R	unique reference signal	<table border="1"> <tr> <td>H</td> <td>0,3µs</td> <td>min. edge distance at output*</td> </tr> <tr> <td>J</td> <td>0,5µs</td> <td></td> </tr> <tr> <td>A</td> <td>1µs</td> <td></td> </tr> <tr> <td>B</td> <td>2µs</td> <td></td> </tr> <tr> <td>C</td> <td>4µs</td> <td></td> </tr> </table>		H	0,3µs	min. edge distance at output*	J	0,5µs		A	1µs		B	2µs		C	4µs	
Push-Pull (AB)	Y																																							
Push-Pull (AB, /AB)	YC																																							
Line Driver (AB, /AB)	L																																							
+5Vdc ±5% (L)	1																																							
+10Vdc ÷ +30Vdc (Y and L)	2																																							
N	without																																							
I	every 5 mm																																							
R	unique reference signal																																							
H	0,3µs	min. edge distance at output*																																						
J	0,5µs																																							
A	1µs																																							
B	2µs																																							
C	4µs																																							
				<table border="1"> <tr> <td>50</td> <td>0,05 mm (50 µm)</td> </tr> <tr> <td>25</td> <td>0,025 mm (25 µm)</td> </tr> <tr> <td>10</td> <td>0,01 mm (10 µm)</td> </tr> <tr> <td>5</td> <td>0,005 mm (5 µm)</td> </tr> </table>		50	0,05 mm (50 µm)	25	0,025 mm (25 µm)	10	0,01 mm (10 µm)	5	0,005 mm (5 µm)	<table border="1"> <tr> <td>xx</td> <td>Cable length on request</td> </tr> <tr> <td></td> <td>Ex: 2= 2 meters</td> </tr> <tr> <td></td> <td>7= 7 meters</td> </tr> </table>		xx	Cable length on request		Ex: 2= 2 meters		7= 7 meters																			
50	0,05 mm (50 µm)																																							
25	0,025 mm (25 µm)																																							
10	0,01 mm (10 µm)																																							
5	0,005 mm (5 µm)																																							
xx	Cable length on request																																							
	Ex: 2= 2 meters																																							
	7= 7 meters																																							

MT/MTS

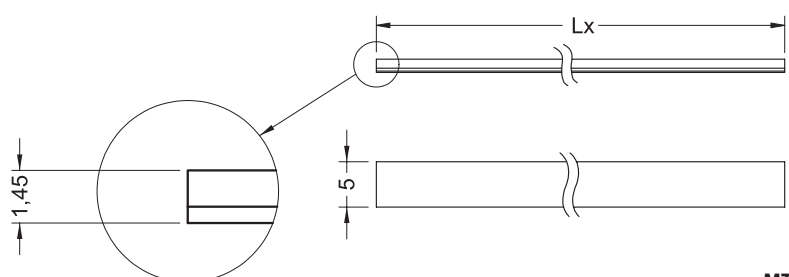


MT



MT-MTS

- Flexible magnetic scale with adhesive tape and cover strip
- Resistant to debris, liquids and oils



MTS

ENVIRONMENTAL SPECIFICATIONS

Operating temperature range:	-40°C ÷ +120°C (-40°F +248°F)
Storage temperature range:	-40°C ÷ +120°C (-40°F +248°F)
Protection:	IP67

MECHANICAL SPECIFICATIONS

Dimensions:	see drawing
Material:	plastic and steel
Accuracy class:	±85 / ±35 / ±8 µm/m
Temperature coefficient:	(11 ± µm/K)
Length:	MT max. 100 m, MTS max. 30 m
Polar pitch	MT/MTS50: 5,0 mm, MT/MTS40: 4,0 mm, MT32: 3,2 mm MT/MTS20: 2,0 mm, MT/MTS25: 2,5 mm, MT10: 1,0 mm

ACCESSORIES

PS1-1,0	Protection profile
---------	--------------------

ORDERING CODE

XXXX	-	X	-	X	-	X
SERIES		LENGTH		ACCURACY CLASS		COVER STRIP
MT40		1,0 m	1	100 ±85 µm/m		0 not supplied (from 30 m)
MT32		2,0 m	2	50 ±35 µm/m (up to 30 m)		1 supplied
MT10		4,0 m	4	10 ±8 µm/m (up to 10 m)		
MT/MTS50		10,0 m	10			
MT/MTS25		20,0 m	20			
MT/MTS20		30,0 m	30			
		(only MT) 50,0 m	50			
		(only MT) 100,0 m	100			